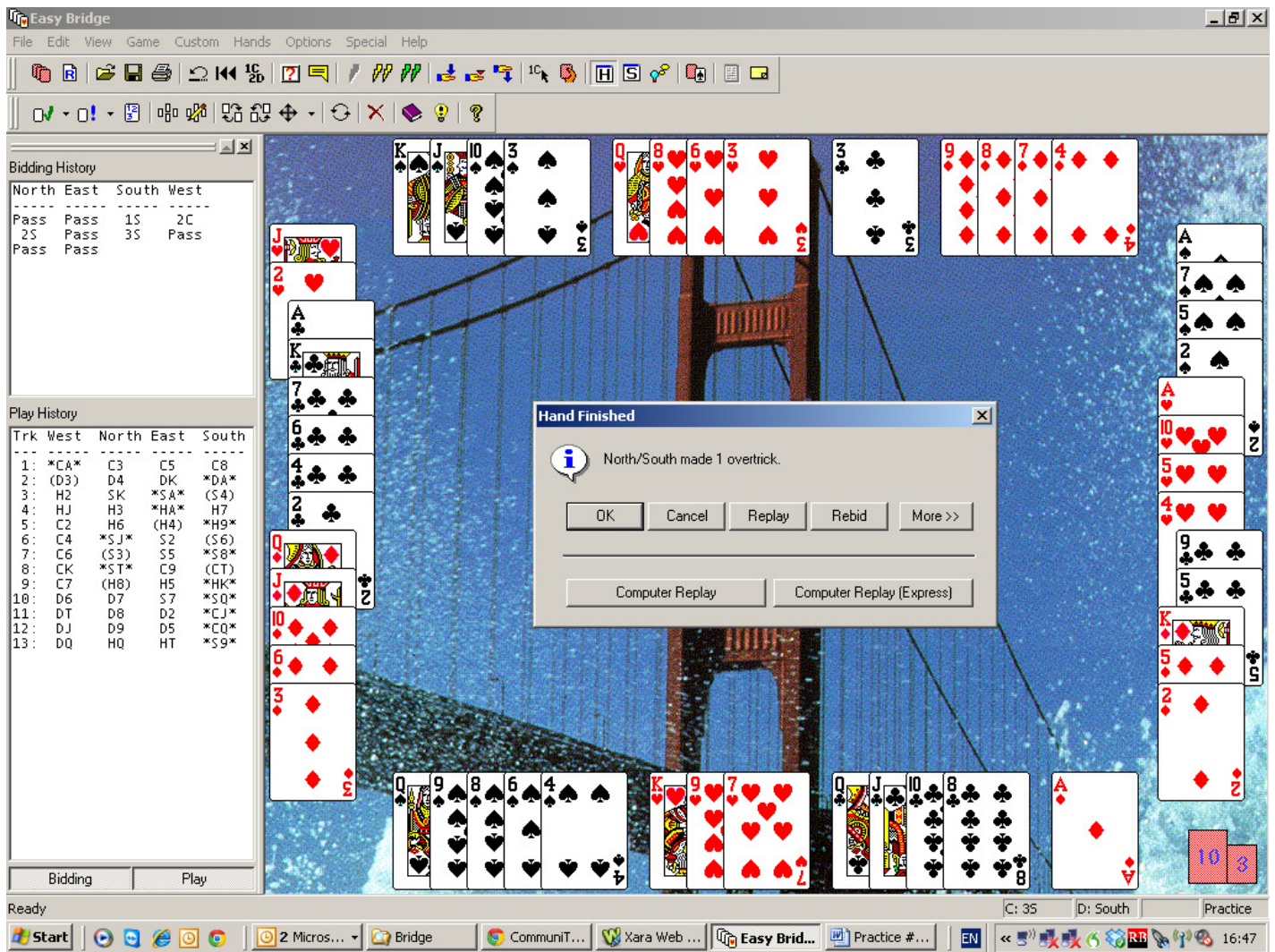


This is another example of the correct time to evaluate your distribution [*Not done here by the Computer!*]. South's opening bid of 1S is quite correct, as is North's support. At this point - **with the Suit agreed** – South now adds value for his Singleton Ace of Diamonds, i.e. two more points, and bids up a level more than he would normally. North **should** add two points for his club singleton, and raise to game.

The lead of the Club Ace – taking the bidding into account – pretty much guarantees the King, so one ruffing finesse – with the Spade J or 10 – when on lead makes the later play very easy. Try it.



Note: in the *Play History* panel that the (brackets) indicate the card lead, and the asterisk* indicates the winning card.

Enjoy mulling it over, and I'd welcome any comments, queries, suggestions etc.

Even corrections!!!

Jimmy O'Brien