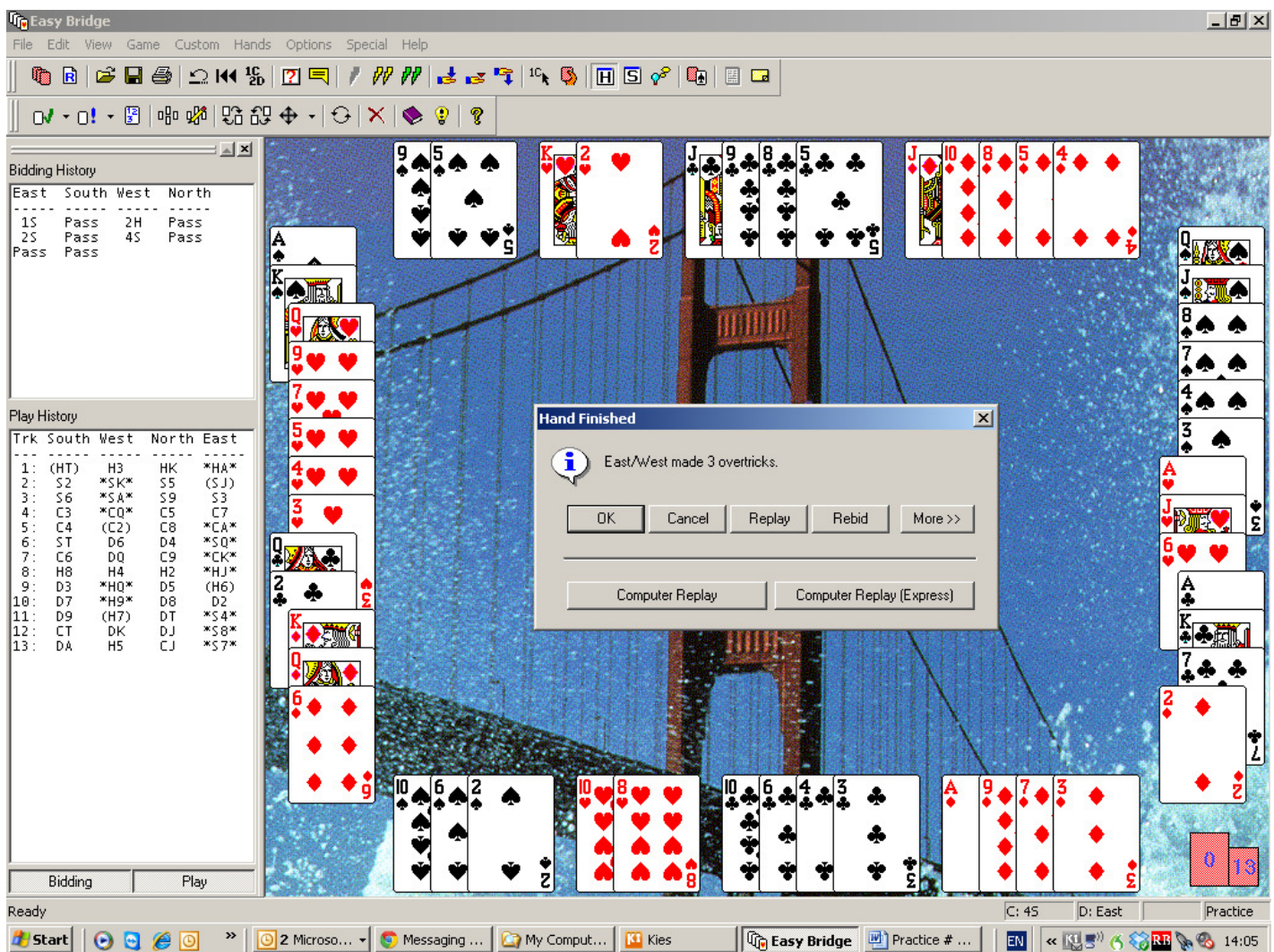


The first thing to be said about this hand is the appallingly timid – and even wrong - bidding by E/W. East's hand is far too strong for the simple 2S rebid (singleton again!), and thus West is frightened off from going further. If East bids, for example, 3S, West can now see that the combined total is min. 31 points. He can now employ Splinter Bids to discern shape, and the Diamond singleton hugely improves both East's hand, and the combined value. Roman Key Card Blackwood is another tool which will place the strengths very accurately.

The small Slam in Spades is stitched unless both the Heart King and Diamond Ace are wrong (if you swap the N/S hands), which would be very unlucky. The correct play after drawing trumps is to lead the Diamond towards the K Q. If South pops his Ace, then you have two Discards for the Heart J 6. If he doesn't, then you have no Diamond loser.

The Heart slam comes down, unavoidably, to the Heart finesse. Try it.



Note: in Play History panel the (brackets) indicate the card lead, and the asterisk* indicates the winning card.

We have write-ups on Splinter Bids and RKC if you want them.

Jimmy O'Brien