

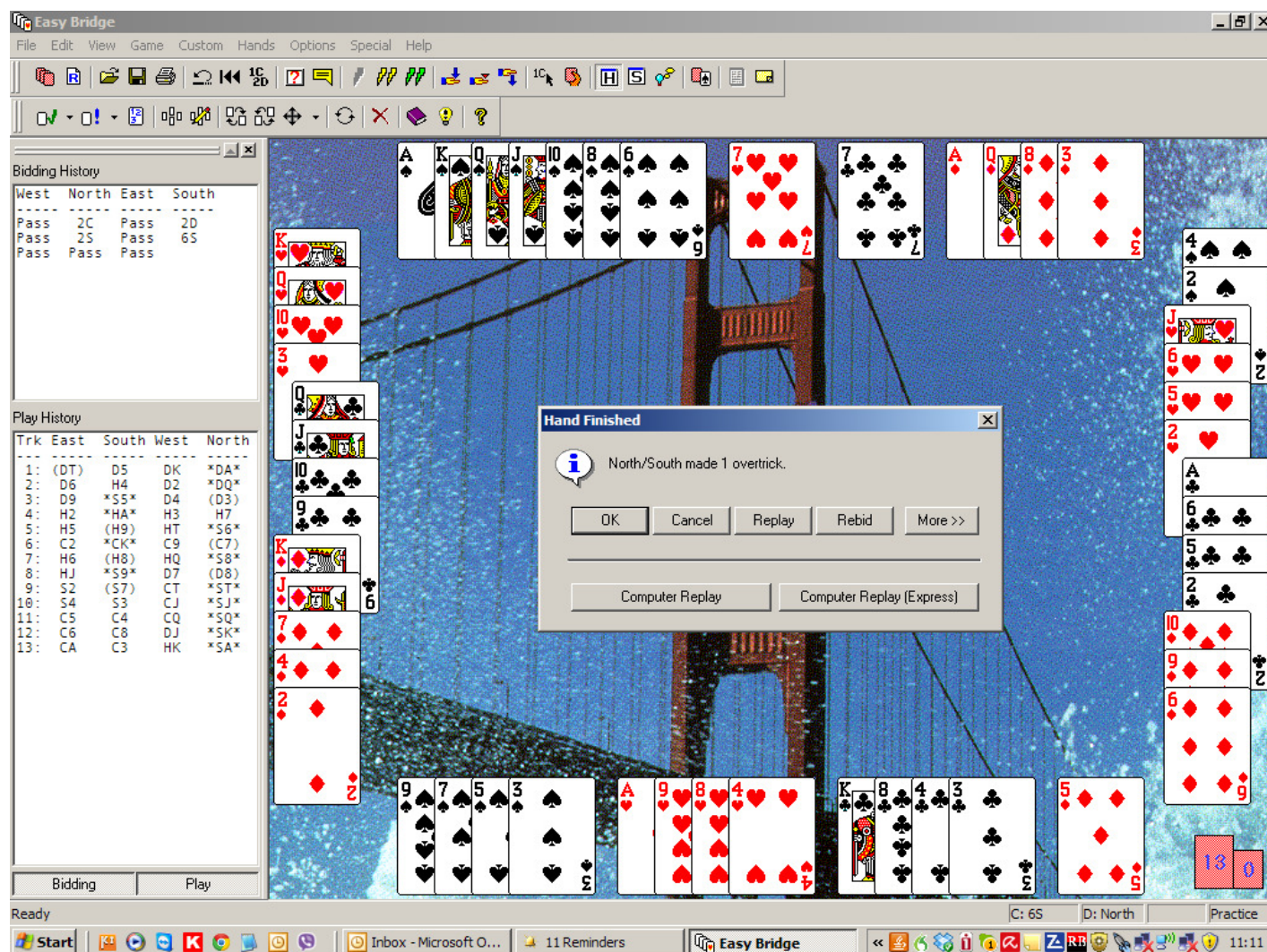
This is a fine example of when the combination of High-Card points and distribution are so powerful a combination. Provided, of course, the Bidding is accurate!!

Bidding:

I strongly recommend the Benjamin Big Two bid, and here is the perfect example. Also, in spite of the distribution, you don't need fancy tools like Splinter Bids and Roman Key-Card Blackwood. Simple Gerber does the job!

W	N	E	S
P	2C (Benjy Big 2)	P	2D (Relay)
P	2S (8 Playing Tricks)	P	4C (Gerber)
P	4S (2 Aces)	P	4NT (Kings?)
P	5C (1 King)	P	6S
All Pass			

South's bidding is very aggressive, but reasonable (for me!). The thinking behind the Slam is simply that he doesn't care which outside Ace North has – if it's the Club Ace, then that suit is strengthened, and if it's the Diamond, then the only issue is Clubs. This is all predicated, of course, on the assumption that North's suit is very strong – which it should be. If it isn't, then the outside suits – including Clubs – must be well covered.



Play:

The contract is cold – even without the awful defence by the computer!! I think East's best lead is the bog-standard Heart. This just means that you play for three D ruffs on the table. The Spade pips make ruffing solid. Also, you should very early play towards the Club K – make East work. He won't like "beating air" and may duck – as here.

Jimmy O'Brien